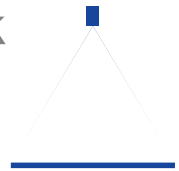
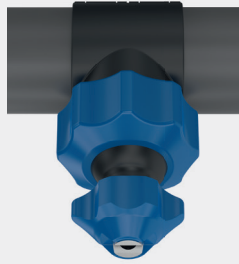


# ➤ Düsensysteme für die Oberflächentechnik Baureihen 676/677 MEMOSPRAY



## Eigenschaften:

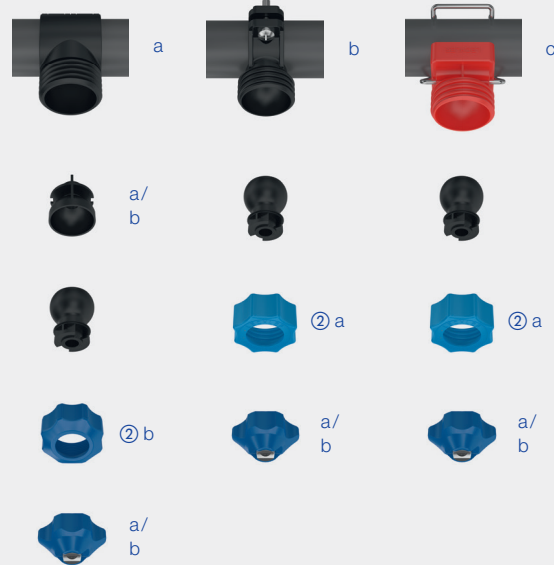
- Beibehaltung der eingestellten Spritzrichtung beim Düsenwechsel
- Einfache, schnelle Düsenmontage ohne Werkzeug
- Viele Kombinationsmöglichkeiten
- Große Auswahl an Volumenströmen, Strahlwinkeln und Materialien



## Anwendungen:

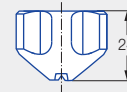
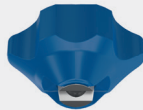
- Entfettung
- Phosphatierung in der Oberflächentechnik
- Industrielle Reinigung
- Kastenwäscher

## Montagebeispiel



## a Flachstrahldüse

Inkl. Dichtung 095.015.7A.05.65  
(Werkstoff: Viton)

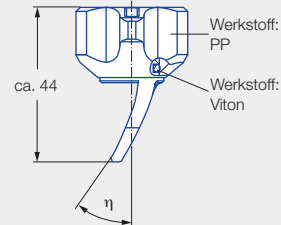
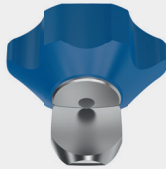


Bezeichnung	Strahlwinkel	Bestell-Nr.					Engster Querschnitt Ø [mm]	V̇ [l/min]					Gewicht [g]			
		Type	Mat.-Nr.					p [bar]					PP/Edestahl 1.4305	PP/Edestahl 1.4404	PP/Keramik	Polypropylen (PP)
			8F	8R	E8	53		1,0	1,5	2,0	2,5	5,0				
a Flachstrahldüse	30°	676.642.xx.40	●	●			1,60	2,83	3,46	<b>4,00</b>	4,47	6,33	15,00	15,00	-	-
		676.722.xx.40	●	●			2,10	4,46	5,46	<b>6,30</b>	7,04	9,96	15,00	15,00	-	-
		676.762.xx.40	●	●			2,30	5,66	6,93	<b>8,00</b>	8,94	12,65	15,00	15,00	-	-
		676.802.xx.40	●	●			2,60	7,07	8,66	<b>10,00</b>	11,18	15,81	15,00	15,00	-	-
		676.842.xx.40	●	●			3,00	8,84	10,82	<b>12,50</b>	13,97	19,76	15,00	15,00	-	-
		676.882.xx.40	●	●			3,40	11,31	13,86	<b>16,00</b>	17,89	25,30	15,00	15,00	-	-
		676.922.xx.40	●	●			4,10	14,14	17,32	<b>20,00</b>	22,36	31,62	15,00	15,00	-	-
		676.962.xx.40	●	●			4,20	17,68	21,65	<b>25,00</b>	27,95	39,53	15,00	15,00	-	-
	677.002.xx.40	●				4,70	22,27	27,28	<b>31,50</b>	35,22	49,81	15,00	-	-	-	
	60°	676.644.xx.40	●	●			1,60	2,83	3,46	<b>4,00</b>	4,47	6,33	15,00	15,00	-	-
		676.724.xx.40	●	●			2,10	4,46	5,46	<b>6,30</b>	7,04	9,96	15,00	15,00	-	-
		676.764.xx.40	●	●			2,30	5,66	6,93	<b>8,00</b>	8,94	12,65	15,00	15,00	-	-
		676.804.xx.40	●	●			2,60	7,07	8,66	<b>10,00</b>	11,18	15,81	15,00	15,00	-	-
		676.844.xx.40	●	●			3,00	8,84	10,82	<b>12,50</b>	13,97	19,76	15,00	15,00	-	-
		676.884.xx.40	●	●	●	●	3,40	11,31	13,86	<b>16,00</b>	17,89	25,30	15,00	15,00	10,00	8,00
		676.924.xx.40	●	●	●	●	4,10	14,14	17,32	<b>20,00</b>	22,36	31,62	15,00	15,00	10,00	8,00
676.964.xx.40		●	●	●	●	4,20	17,68	21,65	<b>25,00</b>	27,95	39,53	15,00	15,00	10,00	8,00	
677.004.xx.40	●	●	●	●	4,70	22,27	27,28	<b>31,50</b>	35,22	49,81	15,00	15,00	10,00	8,00		
677.044.xx.40	●	●			5,50	28,28	34,64	<b>40,00</b>	44,72	63,25	15,00	15,00	-	-		
677.084.xx.40	●	●			6,20	35,36	43,30	<b>50,00</b>	55,90	79,06	15,00	15,00	-	-		

Bezeichnung	Strahlwinkel	Bestell-Nr.					Engster Querschnitt Ø [mm]	V̇ [l/min]					Gewicht [g]			
		Type	Mat.-Nr.					p [bar]					PP/Edelstahl 1.4305	PP/Edelstahl 1.4404	PP/Keramik	Polypropylen (PP)
			8F	8R	E8	53		1,0	1,5	2,0	2,5	5,0				
			Gehäuse: PP Einsatz: 1.4305	Gehäuse: PP Einsatz: 1.4404	Gehäuse: PP Einsatz: Keramik	Polypropylen (PP)										
a Flachstrahldüse	90°	676.646.xx.40	●	●			1,60	2,83	3,46	4,00	4,47	6,33	15,00	15,00	-	-
		676.726.xx.40	●	●			2,10	4,46	5,46	6,30	7,04	9,96	15,00	15,00	-	-
		676.766.xx.40	●	●			2,30	5,66	6,93	8,00	8,94	12,65	15,00	15,00	-	-
		676.806.xx.40	●	●			2,60	7,07	8,66	10,00	11,18	15,81	15,00	15,00	-	-
		676.846.xx.40	●	●			3,00	8,84	10,82	12,50	13,97	19,76	15,00	15,00	-	-
		676.886.xx.40	●	●			3,40	11,31	13,86	16,00	17,89	25,30	15,00	15,00	-	-
		676.926.xx.40	●	●			4,10	14,14	17,32	20,00	22,36	31,62	15,00	15,00	-	-
	676.966.xx.40	●	●			4,20	17,68	21,65	25,00	27,95	39,53	15,00	15,00	-	-	
	120°	676.647.xx.40	●	●			1,60	2,83	3,46	4,00	4,47	6,33	15,00	15,00	-	-
		676.727.xx.40	●	●			2,10	4,46	5,46	6,30	7,04	9,96	15,00	15,00	-	-
		676.767.xx.40	●	●			2,30	5,66	6,93	8,00	8,94	12,65	15,00	15,00	-	-
		676.807.xx.40	●	●			2,60	7,07	8,66	10,00	11,18	15,81	15,00	15,00	-	-
		676.847.xx.40	●	●			3,00	8,84	10,82	12,50	13,97	19,76	15,00	15,00	-	-
		676.887.xx.40	●	●			3,40	11,31	13,86	16,00	17,89	25,30	15,00	15,00	-	-
676.927.xx.40		●	●			4,10	14,14	17,32	20,00	22,36	31,62	15,00	15,00	-	-	
Blinddüse	-	067.630.8F.40.01	●			-	-	-	-	-	-	15,00	-	-	-	

### b Zungendüse

Inkl. Dichtung 095.015.7A.05.65  
(Werkstoff: Viton)



Bezeichnung	Strahlwinkel	η	Bestell-Nr.			Engster Querschnitt Ø [mm]	V̇ [l/min]					Gewicht [g]	
			Type	Mat.-Nr.			p [bar]					PP/Edelstahl 1.4404	PVDF
				8R	5E		1,0	1,5	2,0	2,5	5,0		
				Gehäuse: PP Einsatz: 1.4404	PVDF								
b Zungendüse	45°	35°	676.803.xx.41	●		3,40	7,07	8,66	10,00	11,18	15,81	25,00	-
	60°	35°	676.874.xx.41	●		4,20	10,61	12,99	15,00	16,77	23,72	25,00	-
	60°	35°	676.924.xx.41	●		4,70	14,14	17,32	20,00	22,36	31,62	25,00	-
	70°	40°	677.005.xx.41	●	●	6,00	22,27	27,28	31,50	35,22	49,81	25,00	11,00



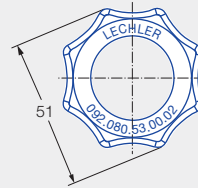
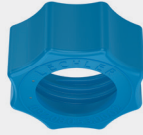
Bestell- Type + Material-Nr. = Bestell-Nr.  
beispiel: 676.646.xx.40 + 8F = 676.646.8F.40

Umrechnungsformel für diese Baureihe:  $\dot{V}_2 = \dot{V}_1 \cdot \sqrt{\frac{p_2}{p_1}}$



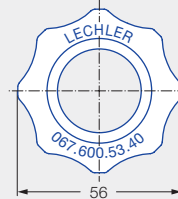
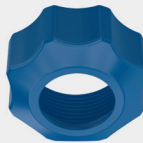
② a Überwurfmutter

092.080.xx.00.02



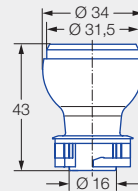
② b Überwurfmutter

067.600.xx.40



Düsenträger

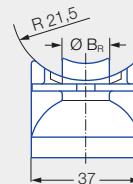
067.630.xx.40



a Kugelaufnahme

067.631.xx.40.x2

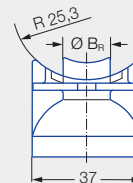
Für Montageschelle  
067.631.xx.40.00



b Kugelaufnahme

067.631.xx.50.x2

Für Montageschelle  
067.631.xx.50.00



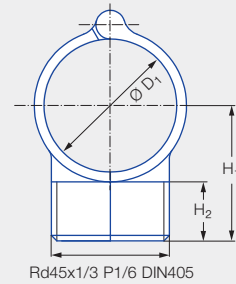
Bezeichnung	Bestell-Nr.		Ø B <sub>R</sub> <sup>1</sup> [mm]	Empfohlener Bohrungs- durchmesser [mm]	Rohr-Ø [mm]	Gewicht [g]
	Mat.-Nr.					
	53	6M				
② a Überwurfmutter	092.080.xx.00.02	●	-	-	-	18,0
② b Überwurfmutter	067.600.xx.40	●	-	-	-	18,0
Düsenträger	067.630.xx.40	●	-	-	-	12,0
a Kugelaufnahme für Montageschelle Nr. 067.631.xx.40.00	067.631.xx.40.22	●	13,8	14,0–14,3	1 1/4" (40,0–43,0)	9,0
	067.631.xx.40.02	●	16,0	16,5–17,0	1 1/4" (40,0–43,0)	11,0
	067.631.xx.40.12	●	19,8	20,3–20,8	1 1/4" (40,0–43,0)	13,0
b Kugelaufnahme für Montageschelle Nr. 067.631.xx.50.00	067.631.xx.50.22	●	13,8	14,0–14,3	1 1/2" (46,0–49,0)	9,0
	067.631.xx.50.02	●	16,0	16,5–17,0	1 1/2" (46,0–49,0)	11,0
	067.631.xx.50.12	●	19,8	20,3–20,8	1 1/2" (46,0–49,0)	13,0

<sup>1</sup> Ø B<sub>R</sub> = Zapfendurchmesser.



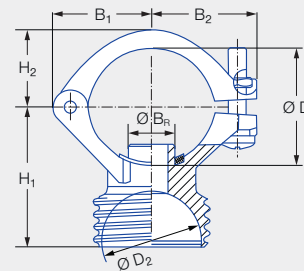
### a Montageschelle

067.631.xx.x0.00



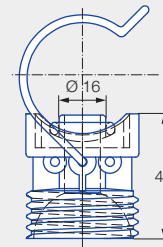
### b Montageschelle

090.0x3.xx.4x.10



### c Einfach-Bügelschelle

092.08x.xx.00



Bezeichnung	Bestell-Nr.		Abmessungen [mm]						Ø B <sub>R</sub> <sup>1</sup> [mm]	Empfohlener Bohrungs- durchmesser [mm]	Rohr-Ø (Ø D) [mm]	Gewicht [g]
	Type	Mat.-Nr.	B <sub>1</sub>	B <sub>2</sub>	H <sub>1</sub>	H <sub>2</sub>	Ø D <sub>1</sub>	Ø D <sub>2</sub>				
		53										
a Montageschelle	067.631.xx.40.00	●	-	-	47,7	22,0	43,0	-	-	-	1 1/4" (40,0-43,0)	31,0
	067.631.xx.50.00	●	-	-	51,5	22,0	50,6	-	-	-	1 1/2" (46,0-49,0)	33,0
b Montageschelle	090.023.xx.44.10	●	30,0	32,0	44,5	23,0	-	34,0	13,8	14,0-14,3	1" (32,0-34,5)	48,0
	090.023.xx.43.10	●	30,0	32,0	44,5	23,0	-	34,0	16,0	16,5-17,0	1" (32,0-34,5)	48,0
	090.033.xx.44.10	●	33,0	36,0	48,0	27,0	-	34,0	13,8	14,0-14,3	1 1/4" (40,0-43,0)	50,0
	090.033.xx.43.10	●	33,0	36,0	48,0	27,0	-	34,0	16,0	16,5-17,0	1 1/4" (40,0-43,0)	50,0
	090.033.xx.40.10	●	33,0	36,0	48,0	27,0	-	34,0	20,0	20,5-21,0	1 1/4" (40,0-43,0)	50,0
	090.043.xx.44.10	●	36,0	35,0	52,0	30,0	-	34,0	13,8	14,0-14,3	1 1/2" (46,0-49,0)	52,0
	090.043.xx.43.10	●	36,0	35,0	52,0	30,0	-	34,0	16,0	16,5-17,0	1 1/2" (46,0-49,0)	52,0
	090.043.xx.40.10	●	36,0	35,0	52,0	30,0	-	34,0	20,0	20,5-21,0	1 1/2" (46,0-49,0)	52,0
c Einfach-Bügelschelle	092.080.xx.00	●	-	-	-	-	-	-	16,3*	16,5-17,0	1" (32,0-34,5)	36,0
	092.081.xx.00	●	-	-	-	-	-	-	16,3*	16,5-17,0	1 1/4" (40,0-43,0)	38,0
	092.082.xx.00	●	-	-	-	-	-	-	16,3*	16,5-17,0	1 1/2" (46,0-49,0)	40,0
	092.083.xx.00	●	-	-	-	-	-	-	16,3*	16,5-17,0	2" (58,0-62,0)	42,0

\* Weitere Zapfendurchmesser auf Anfrage.

<sup>1</sup> Ø B<sub>R</sub> = Zapfendurchmesser.

Bestell- Type + Material-Nr. = Bestell-Nr.  
beispiel: 067.631.xx.40.00 + 53 = 067.631.53.40.00

Umrechnungsformel für diese Baureihe:  $\dot{V}_2 = \dot{V}_1 \cdot \sqrt{\frac{p_2}{p_1}}$